

SPINNER

VC850-5A

NEU
NEW
NOUVEAU

Performance Machining Centre
for 5-Axes Machining



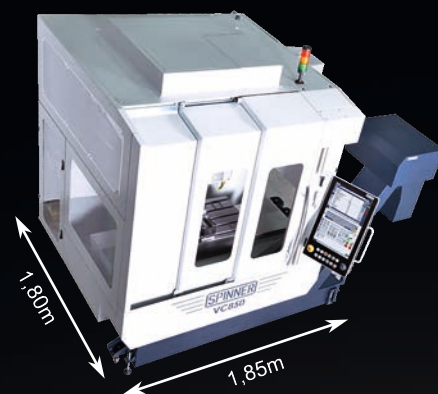
Mechanical Engineering

Made in Germany

www.spinner.eu.com
sales@spinner.eu.com

Compact dimensions

By means of an innovative guideway cover concept the required floor space is up to 30% lower than for similar machines of the same working area.



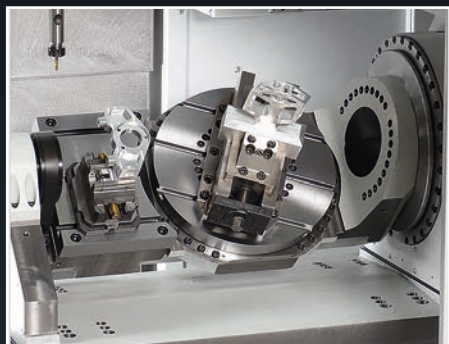
Optimal chip disposal

There are two additional worm conveyors for automatic chip delivery to the chip conveyor at the front of the machine.



Fully integrated 4th/5th axis with additional clamping plate

In high-precision design, with integrated measuring systems, suitable for workpieces up to approximately D=350mm x 300mm height on the rotary table, including additional clamping plate for 3-sided machining on the left side.



Ergonomic operating panel

For optimal operating comfort not only the height, but also the angle of the operating panel can be adapted to the operator.

In addition, the control panel can be swivelled. Siemens with 24-inch SPINNER Touch screen



Heidenhain TNC640
With 19-inch Touch screen



Heidenhain TNC620
With 19-inch Touch screen

Powerful
Dynamic
Ergonomic
Compact
Made in Germany

High spindle speeds

12.000 rpm
18.000 rpm

Large tool magazine

32 or optionally 48 tools are available.

Cast structure

A heavy cast structure optimised by the FEM method ensures high rigidity and high cutting performance.

Large ballscrews

All ballscrews are supported on both sides.

Patented guideway cover concept

With respectively only one wiper in X/Y for best guideway protection and easy maintenance instead of vulnerable cover elements.

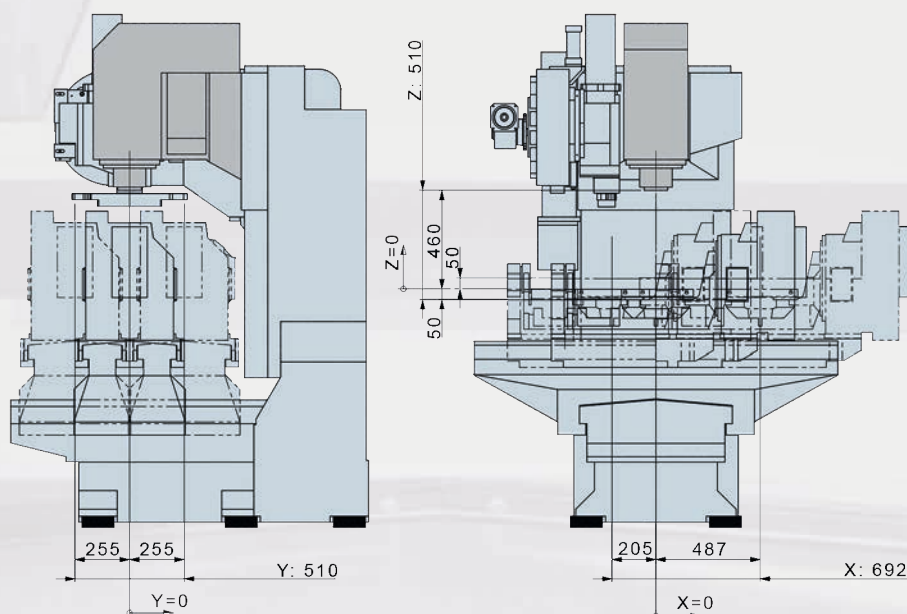
5-Axes Table

Replaces the fixed table of the VC850, which thereby becomes the VC850-5A. Optimal stiffness and integrated with high precision. Ergonomic access for clamping the workpieces. Large working area combined with an optimally compact machine.

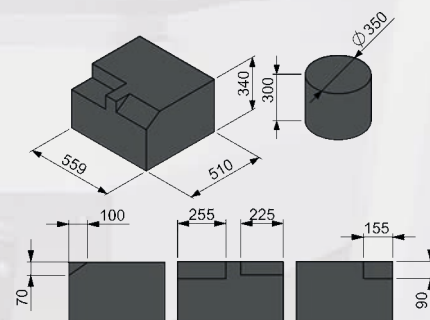


Working area			
X axis	815 mm		
Y axis	510 mm		
Z axis	510 mm		
Max. distance spindle nose - table	460 mm		
Axes			
Feed / Rapid traverse X, Y, Z axis	40 m/min		
Spindle			
Max. spindle speed	12.000 rpm	18.000 rpm	
Tool taper	SK40	HSK63	
Performance	22,6/11,5 kW <small>(max/S1)</small>	20,7/10,8 kW <small>(max/S1)</small>	
Torque	108/55 Nm <small>(max/S1)</small>	66/34 Nm <small>(max/S1)</small>	
Rotary/Tilting table			
Table dimensions	Rotary table diameter 350 mm/Clamping plate approximately 170x280mm		
Max. table load	200 kg		
A axis	-110°/+45°		
C axis	360°		
T slots	3x 12H7		
Tool magazine			
Number of tool stations	32 +1 (optional 48 +1)		
Max. tool diameter	75 mm		
In case of free adjacent tool stations	125 mm	75 mm	
Max. tool length	300 mm		
Max. tool weight	7 kg		
General indications			
Dimensions (L x W x H) ¹⁾	2493 x 1800 x 2420 mm		
Weight ²⁾	approx. 5.000 kg		

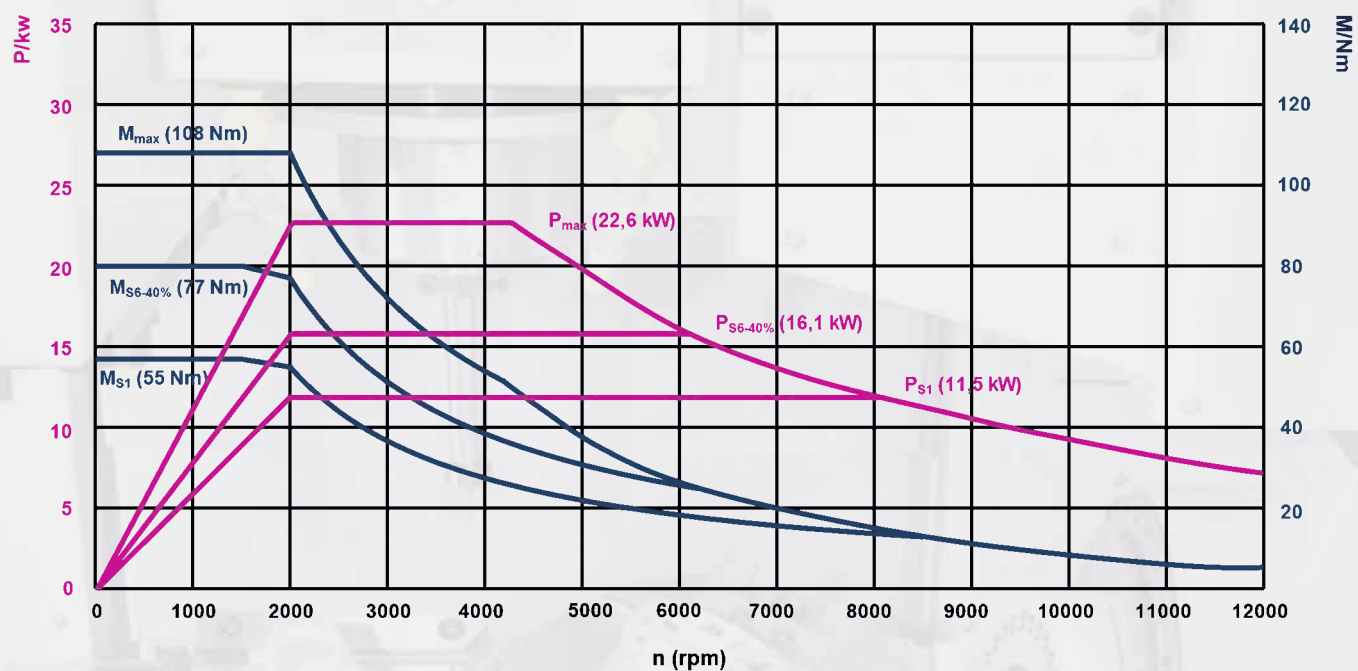
1) See floorplan, 2) Without options, without chip conveyor



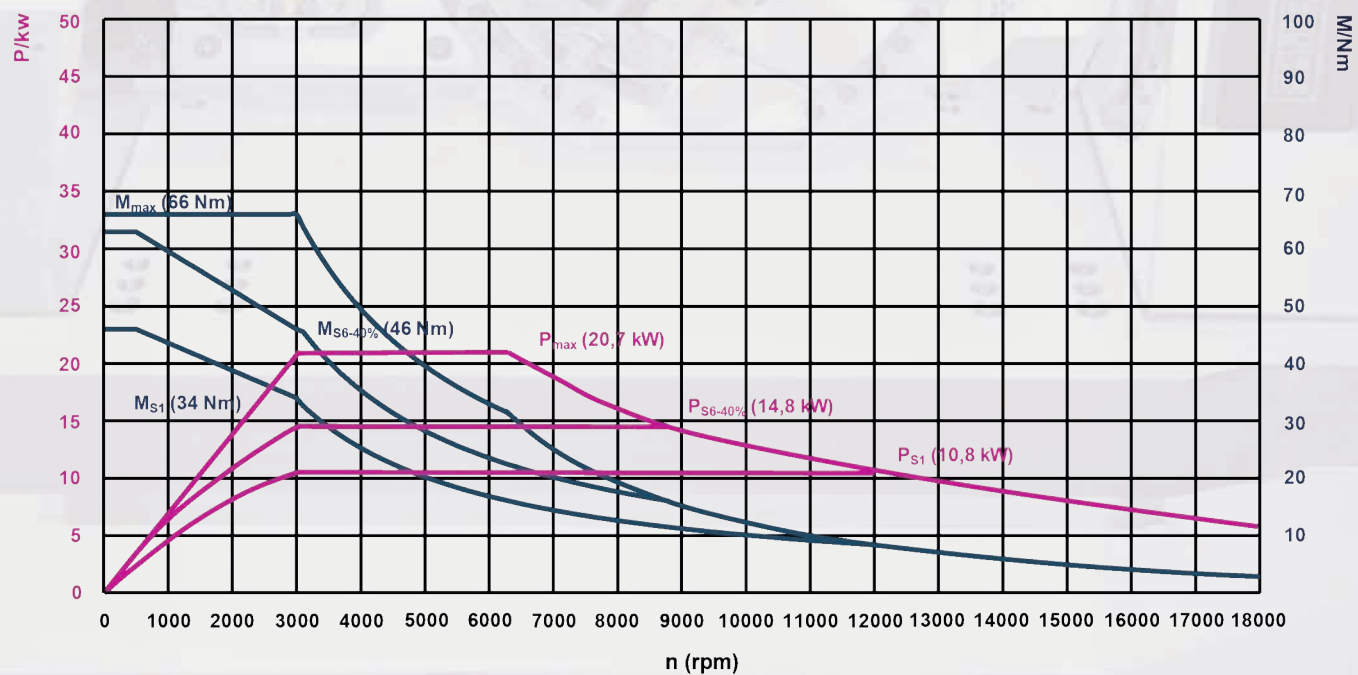
Maximum workpiece size



12.000 rpm

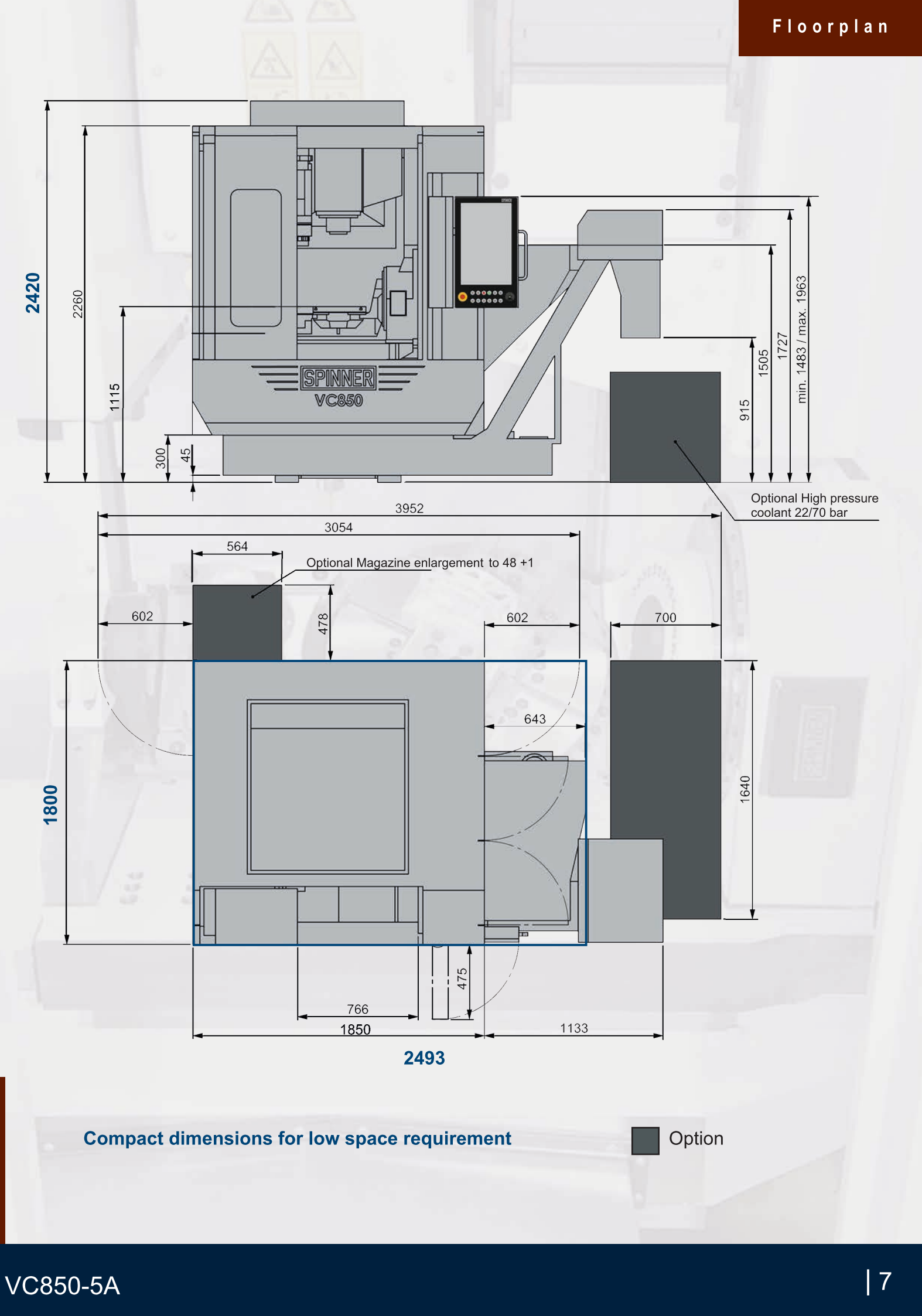


18.000 rpm





Other options on demand



Option



Werkzeugmaschinenfabrik GmbH



Spinner Machine-Tools are working successfully world wide with many well known clients in more than 60 countries on 6 continents. We have been fortunate enough to attract small component suppliers in addition to well known global groups in all metal machining industries.

We have designed and produced the most modern machine-tools since 1950. More than 20.000 delivered machines demonstrate their high efficiency, precision and reliability, everyday.

Although Spinner is a medium-sized enterprise we produce and sell more than 1.000 CNC machines a year. And the number is increasing every year. Our company combines the know-how of a global player with the flexibility and cost-effective structures of a family owned business.

Place your trust in our products as well and let us know what we can do for you.



Video

SPINNER Werkzeugmaschinenfabrik GmbH

Rudolf-Diesel-Ring 24

82054 Sauerlach

Tel. +49 (0) 8104 803-0

Fax +49 (0) 8104 803-19

sales@spinner.eu.com



Version 26.3.2021 (GB)

Technical changes of specifications and pictures are subject to change without notice - Pictures can include options, accessories